



Unan Trading 

“THE Beef”



Largest Country in South America

5th Largest in the World

Amazon Rainforest

Extensive River Systems

Highlands

Central Plateau

Pantanal: World's Largest Wetland

Serra do mar: Atlantic Forest Biome

7000 Km Atlantic Coastal Line





Brazil

North: Amazon Rain Forest

Central West: Pantanal and Cerrado

Northeast: Tropical Tropical and Semi Arid Climate beaches, dunes, and cliffs.

South East: Atlantic Forest Biome

Southern Region: The grasslands (Pampa biome) of Southern Region.

Rio Grande Sul

Rio Grande do Sul is a state in the southernmost part of Brazil, bordered by Uruguay to the south and Argentina to the west.

1. Coastline: along the Atlantic Ocean, featuring important ports like Porto Alegre.
2. Pampa Biome extensive grasslands, which are vital for livestock grazing.
3. Highlands and Plateaus: The state features highlands and plateaus -
4. Uruguayan Border is a commercial trade area.
5. Cultural Heritage particularly from Germany and Italy.
6. Wine Regions the Serra Gaúcha, which contributes to Brazil's growing wine industry.
7. Cattle Farming and Agriculture plays a major role in state economy.



Grasslands

Pampa Biome

Grande do Sul is a state in southern Brazil, and its grasslands are known for their diverse ecosystems.

Pampa Biome: Unique and important ecosystem in South America. The Pampa biome is characterized by vast plains, with a mosaic of grasses, shrubs, and herbaceous plants.

Diversity of Grass Species: Various types of native grasses that contribute to the overall biodiversity of the region.

Adaptation to Climate: The climate in Rio Grande do Sul can vary from subtropical to temperate. The grasses in the region are adapted to these climatic conditions, including hot summers and relatively cold winters.

Rich Biodiversity: The grasslands support a rich biodiversity, not only in terms of plant species but also in terms of wildlife. The Pampa biome is home to diverse fauna, including mammals, birds, and insects.

Livestock Grazing: The grasslands are often used for livestock grazing, particularly cattle farming. The grasses provide a natural forage source for livestock, and ranching is an important economic activity in the region.

Industrial Agriculture

World's fourth largest grain producer
50% of the global soy market
Second largest corn exporter in 2020.
Brazil has the largest bovine herd in the world.

Both small and large farmers,

Industrial agriculture in Brazil is significant in economy..

- Small and Family Farmers play a crucial role
- Regional Dynamics
- Debates and Policies: competitiveness of larger farms while ensuring the sustainability and viability of small and family farms.

In essence, small farms in Brazil are not just producers; they are custodians of culture, champions of sustainability, and vital contributors to the vibrant mosaic of the country's agro industry.





Productivity Land Ownership

Usucapião in Brazil

Legal concept allowing land claim through continuous and uninterrupted possession.

Known as "usucapião" in Portuguese.

Landowners opt for leasing to prevent adverse possession claims.

Lease agreements outline terms, ensuring productive use for purposes like livestock grazing.



ZEBU BREEDS

Tolerant to heat, hump in their back, resistant to parasites, suited for extensive grazing systems. Suited for Tropical climates. Most common cattle in Brazil (Nelore)



BRAHMAN Raised in various regions, particularly in states like Bahia, Goiás, and Mato Grosso, focusing on tropical and subtropical climates.



GUZERA Adapted to tropical conditions, present in regions with warmer climates, including parts of the Northeast, North, and Central-West.



NELORE Thrives in central and northern Brazil, prevalent in states like Mato Grosso, Mato Grosso do Sul, Goiás, and parts of Minas Gerais.



EUROPEAN BREEDS

High quality meat, adaptable to hot and cold temperatures – Thicker fur that enables them to sustain lower temperatures. Angus and Hereford are found in southern states of Brazil. Charolais in Sao Paulo and Minas Gerais



ANGUS - originally from Scotland, are raised in Brazil for their high-quality beef. They are known for their black coat and excellent meat quality.



CHAROLAIS: Originally from France with Muscular build and white fur is common in Brazilian beef production.



HEREFORD cattle, with their distinctive red body and white face, are raised in various regions of Brazil. They are well-suited for both meat and dairy production.

“Frigorifico”

Cold Storage - Slaughterhouse

Slaughter and Processing:

cattle slaughter, process meat, and adhere to hygiene, safety, and quality standards.

Meat Packing and Exporting:

Processed meat is cut, packed, and distributed globally, contributing to Brazil's significant beef exports.

Value-Added Products:

Some frigoríficos produce value-added beef items like sausages and burgers.

Integration and Supply Chain Management:

Maintain relationships with cattle producers, own feedlots, and collaborate for an efficient cattle flow from farms to slaughterhouses.

Government Regulations and Export Certification:

Compliance with regulations on food safety, animal welfare, and environmental standards is crucial. Ensuring meat traceability and adhering to global health standards.

Domestic and International Markets

Global Players “Giants”

JBS Friboi

JBS- Bertin S.A

Marfrig Global Foods

Minerva Foods



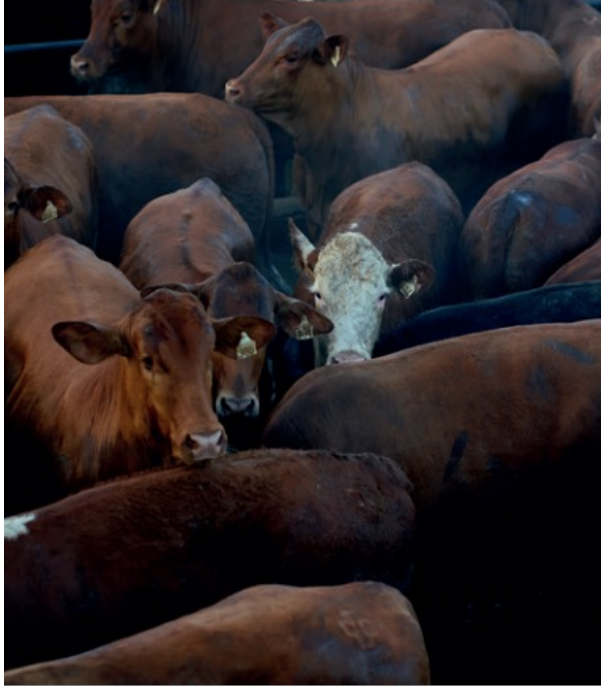
Transport

A pivotal aspect of the operation is ensuring the transportation of livestock in optimal condition to the slaughterhouse. Typically, slaughterhouses operate in 2 or 3 shifts consecutively, emphasizing the precision of logistics. A crucial element is transporting the livestock in the calmest manner possible. Any agitation during transport can negatively impact the tenderness of the resulting meat.

Size of Brazil and Connectivity of Urban areas and international ports are done with state and federal roads. Trucks play a vital role in Brazil's economy.



Frigorifico: Operations



Transportation Team



↔ Slaughter Team – Processing Team ↔



Logistics and Supply Chain



Production and Operations

Safety and Environmental Compliance

Animal Welfare

Sanitation and Waste Management (3rd Party)

Certifications (3rd Party)

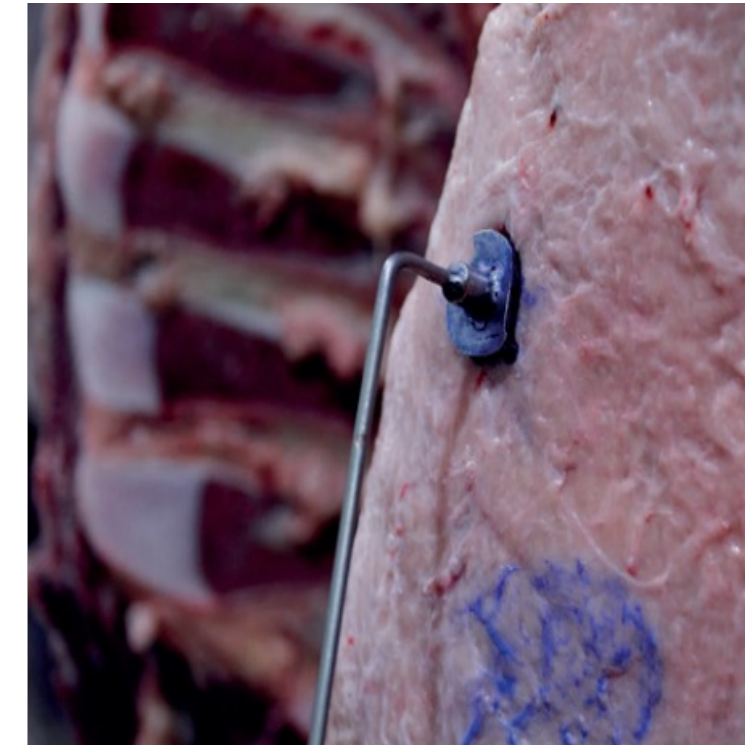
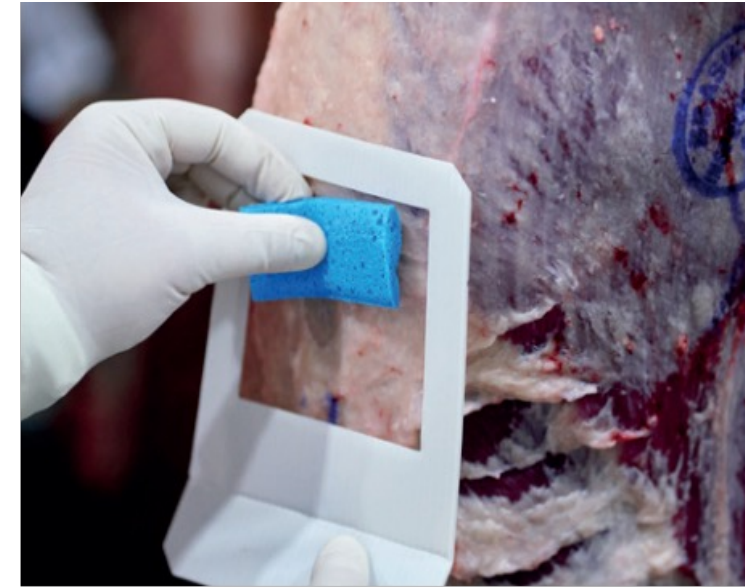
Labeling

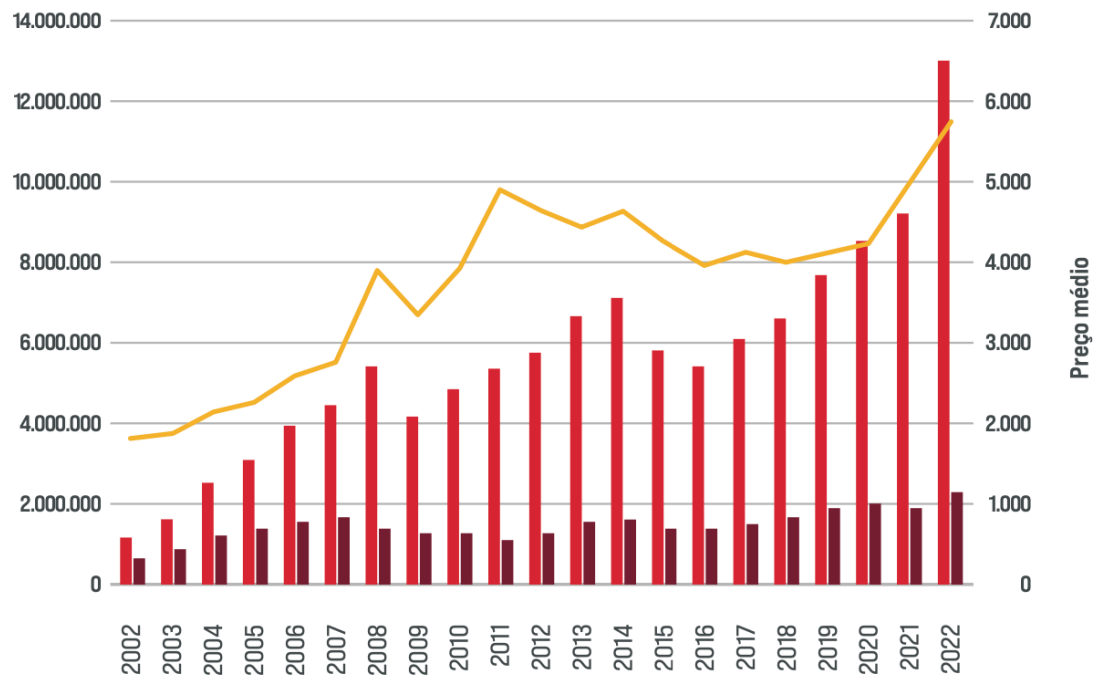


THE ANGUS BEEF CERTIFICATION PROGRAM

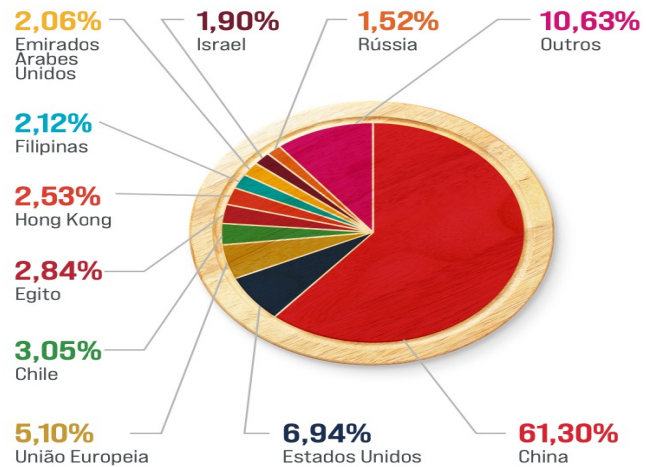
is recognized by the Confederation of Agriculture and Livestock of Brazil (CNA), and it is audited externally by TÜV RHEINLAND, which provides Brazilian Angus beef with international credibility.

The brands receiving the Certified Brazilian Angus Beef seal are quality assured and represent the success of the "From Pasture to Plate" concept.





■ Faturamento Mil US\$ ■ Toneladas ■ US\$/ton



BEEF INDUSTRY

HOW BIG?

BRAZIL

Largest herd in the world 217 Million heads
 It is the largest meat exporter in 2020, 2021, number 2 after USA in 2022 and 2023.
 Brazil consumes 70% of the meat it produces domestically.

Zimmer

CORTES QUE NOS UNEM.



FRIGORÍFICO ZIMMER IN NUMBERS



Receiving Capacity:

**25 CORRALS WITH THE CAPACITY
FOR 931 ANIMALS.**

Slaughter Line:

400 ANIMALS A DAY.

Cold Storage Chamber

**5 CHAMBERS WITH THE CAPACITY
TO STORE 870 CARCASSES.**

Deboning Sector:

**100 TONS PER DAY OVER TWO
PRODUCTION SHIFTS.**

Storage:

**3 FREEZING TUNNELS WITH THE
CAPACITY TO STORE 72 TONS.**

**2 FREEZING PRODUCT CHAMBERS WITH
THE CAPACITY TO STORE 198 TONS.**

**1 REFRIGERATED PRODUCT CHAMBER
WITH THE CAPACITY TO STORE 250 TONS.**

Zimmer

<https://frigorificozimmer.com.br/>

Zimmer is a distinguished family-run business with a rich 50-year history deeply rooted in the region.

Zimmer works with European breeds only: Angus, Herford & Charolais

Renowned for their **premium meat**, Zimmer's products are prominently featured in top establishments across Rio Grande do Sul (RS) and are sought after in the retail market. Interestingly, a significant portion of their production remains within the state, reflecting the substantial demand for their exceptional offerings.

The company's journey began humbly, initiated by the chairman himself half a century ago. Over the years, Zimmer has cultivated a stellar reputation in the region, fostering strong relationships with both large and small-scale farmers involved in cattle cultivation. What sets Zimmer apart is the personal touch embedded in these collaborations, a stark contrast to the capabilities of industry giants driven by their sheer size.

The niche carved out by Zimmer, coupled with their enduring family legacy and intimate ties with cattle producers, positions them to source top-quality animals. Their commitment to efficient operations has propelled Zimmer to become one of the premier premium meat brands in the meat capital of Brazil.

This success is not merely a testament to their product quality but also reflects the authenticity and personal connections that define the essence of Zimmer's longstanding presence in the industry.



ZIMMER TRADITIONAL LINE

Frigorífico Zimmer Traditional Cuts have an undisputable tenderness and flavor thanks to our high quality control. Before they are served at your table, our products are selected and inspected to ensure that they always keep to their high standards.



ZIMMER BABY BEEF LINE

The Zimmer Baby Beef Line is focused on ensuring that the products are of the greatest possible quality by undergoing a thorough control process. Heifers with up to 4 teeth, and approximately 30 months old have the perfect balance of age, weight, and amount of fat on the carcass.

This is why the tenderness and flavor of our Baby Beef cuts are unmistakable.



ZIMMER ANGUS LINE

The Aberdeen Angus is a Scottish breed that is known internationally for the greater tenderness, flavor and juiciness of its beef which, allied to its excellent productivity in the field, has ensured its leading position. It is the cattle breed with the greatest number of positive characteristics, which ensure its beef is of exceptional quality.

In order to keep to the highest of standards, Frigorífico Zimmer has ensured that it meets the requirements established by the Brazilian Angus Association through the Certified Angus Beef seal.



TERMS AND CONDITIONS

- MOQ is 20 feet container. For a 40 Feet Container, or second 20 Feet container, we offer 2% volume discount from total bill. Prices quoted are CIF Male Port
- Any items from the list can be combined at mixed quantities as a “mixed cut container”.
- To fill one container of 40 feet 27000 KG is required. For 20 feet 14,000 KG order is required
- Products are packed in primary and secondary packing. in **18kg to 22kg black boxes with special export labels.**
- All beef is Halal with Halal Certificate - ISO & ISPO Certification.
- Freezing method is BQF or IQF (Block quick frozen or individual quick frozen) blasted at -40 degrees Celsius. Storage at – 20 degrees Celsius. Temperature during transportation – 20 Degrees Celsius
- Brand is Zimmer Beef
- Life shelf 2 years – 24 months
- Expiry date is 2 years from slaughtering date. Slaughtering takes place maximum a week before loading.
- Plant location – Rio Grande Sul Brazil – Plant ID SIF1 and SIF103 are registered and approved for global export.
- Exportation Port – Porto Allegre Brazil

- Prices quoted are CIF Male Port.
- Fill out your order form enclosed and send to us and we will issue and official quotation. Following your approval, we will issue a proforma invoice.
- 2- We require 30% advance payment against proforma invoice at the time of order. This payment can be made to our BML Bank Account. 50% of the total to be paid at the time of loading against bill of lading. (BML Account) 20% of the total once the delivery reaches the destination MLE port (BML account)
- All orders will be inspected by our team in Brazil before they are being loaded. At this time, we will share video and photos of the loading process.
- We will need 4 days to plan your order and 2 weeks to load. The shipment will take 48 to 62 days. For entire process of the ordering till it reaches you, you must calculate 3 months and plan your future orders accordingly. We have 2 containers available for March departure.
- The brands we work are the top brands in Brazil recommended by the Brazil Ministry of Foreign affairs to enhance trade between two nations.
- All payments can be made to our bank account in Bank of Maldives in USD.
- If you chose to order 40 feet container rather than 20 feet, you can save 2% more.
- There are few items on the list that we think are very suitable to staff canteen operation. We indicated them for your easy reference.
- Thank you for your interest in working with us.
- The website of the brand is <https://frigorigozimmer.com.br/>
- Unan Trading is the designated agent to represent Zimmer in Maldives.



Thank You,

Unan Trading is committed to being a global catalyst for the recognition of premium Brazilian products.

Through strategic partnerships, innovative marketing, and a dedication to quality, we aim to create a flourishing trade ecosystem that benefits both Brazilian producers and discerning consumers worldwide.

Join us in putting a spotlight on the richness and excellence of Brazilian offerings, offering a unique advantage to Maldivian businesses and resorts.

Contact Us

COMPANY INFORMATION



www.UnanHospitality.com and www.unantrading.com

Unan Trading LTDA
CNPJ – 53.840.594/0001-05
Address: Calc das Margaridas Numero 163, Sala 02,
Commercial Alphaville Barueri SP, 06-453-038



Unan Hospitality LTDA
CNPJ - 51.943.585/0001-14
Address: Calc das Margaridas Numero 163, Sala 02,
Commercial Alphaville Barueri SP, 06-453-038

Unan Hospitality Maldives Private Limited
Company registration: C-0503/2010
Adress: 4th floor Ma. Oliveena Chaandhanee Maagu Male
Maldives



Unan Hospitality LTD
Registration Number: 237326
F20 First Floor Eden Plaza, Eden Island Seychelles



Contact : Mariana@unantrading.com
Mobile : +960 94 11900 & +55 (11) 91 911 9000